

Princess V65

year of construction	2001
colour	weiss
material	GFK
engine	2x MAN (1300 PS Diesel)
milage	1300 h
transmission	shaft
cruising speed	25 kn
max. speed	33 kn
length	19,20 m (63,0 ft.)
width	5,00 m (16,4 ft.)
draft	3,00 m (9,8 ft.)
weight	44.240 Kg
fuel tank	3.100 L
fresh water tank	600 L
cabins	4
beds	7
bathrooms	3
anchored at	upon request
Price in EUR	BFN VAT not paid

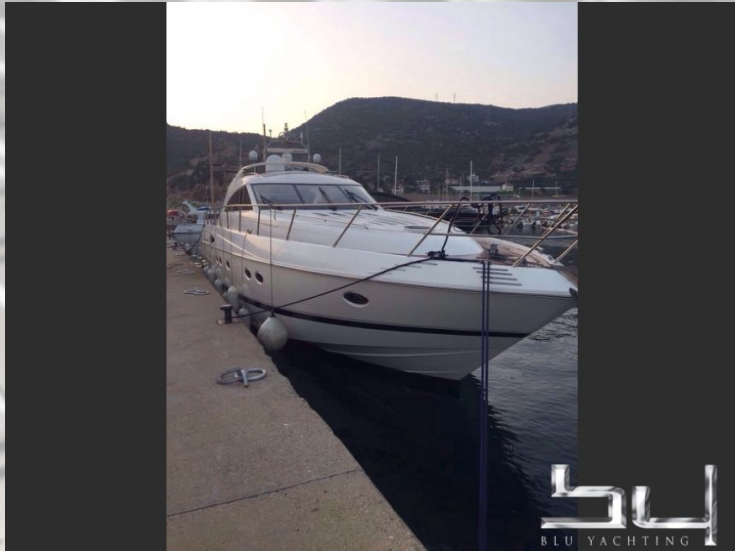


description:

nice Princess....price + commission

technical equipment:

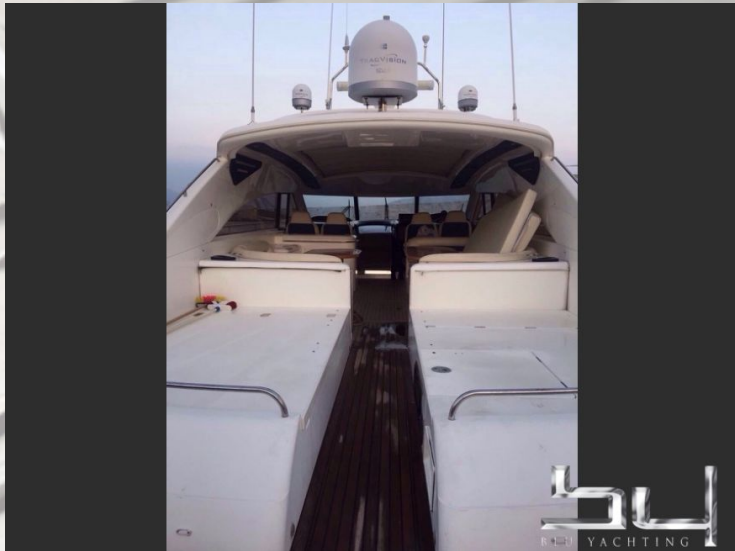
air conditioning, heating, Sat, TV, DVD, Radio, CD, water pressure system, hot water system, holding tank, GPS plotter, radar, autopilot, depth sounder, microcommander, compass, fish finder, gangway, teak deck, bathing platform, ceramic cooktop, refrigerator, wetbar, camper top, shore supply 220 volt, electric anchor windlass, bow thruster



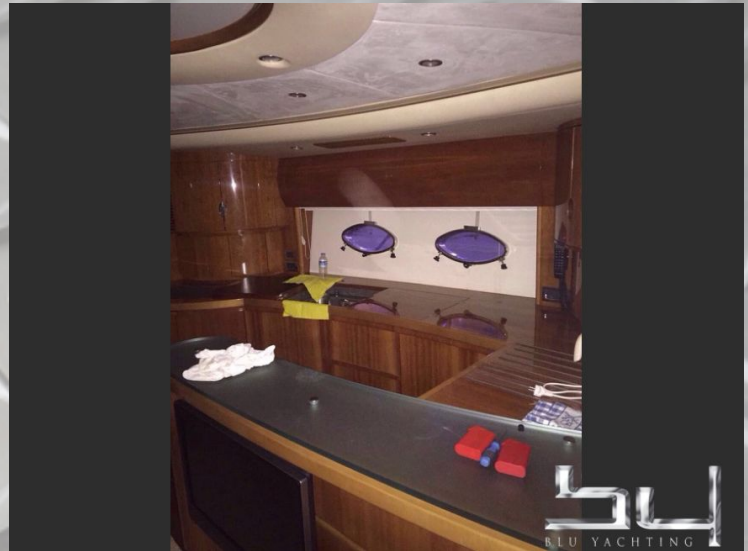
outside view - picture 1



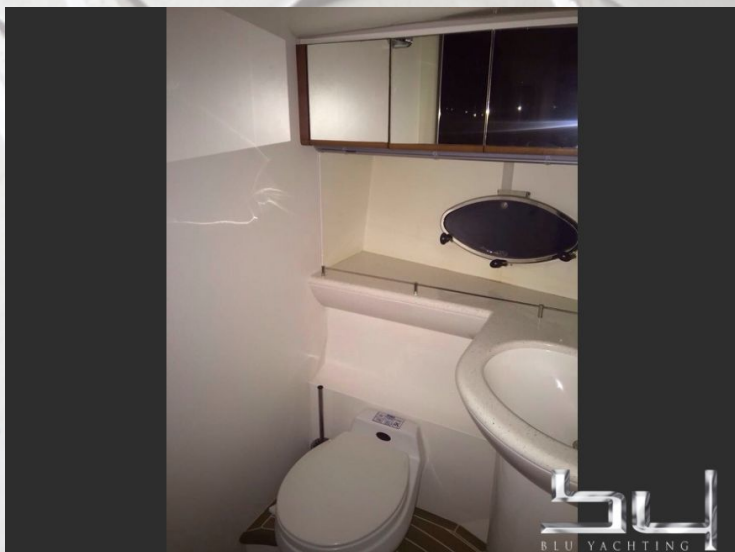
outside view - picture 2



outside view - picture 3



outside view - picture 4



outside view - picture 5



outside view - picture 6



outside view - picture 7



outside view - picture 8



outside view - picture 9



outside view - picture 10



outside view - picture 11



outside view - picture 12



outside view - picture 13



outside view - picture 14



outside view - picture 15



outside view - picture 16